

Racelogic Driver Installation Guide For Windows XP

When connecting your Racelogic product to a computer, there are three modes of operation:

1. Reading and writing to the SD card
2. Streaming data to VBOXTools analysis software or using VBOX Setup
3. Upgrading the firmware

Mode 1 is automatically detected by Windows, so it does not need a specific driver. The drivers for Mode 2 and Mode 3 are loaded during the VBOXTools software CD installation process.

However, when you try to stream data to VBOXTools software, enter VBOX Setup or perform an upgrade, you will need to go through the 'Found New Hardware Wizard' to let Windows install the driver automatically. You will have to do this once for each unit, and may need to repeat the process when using different USB ports. You will also need to do this separately for each of Mode 2 and Mode 3, as they require different drivers.

When a driver needs to be installed, Windows will display a 'Found New Hardware' pop-up:



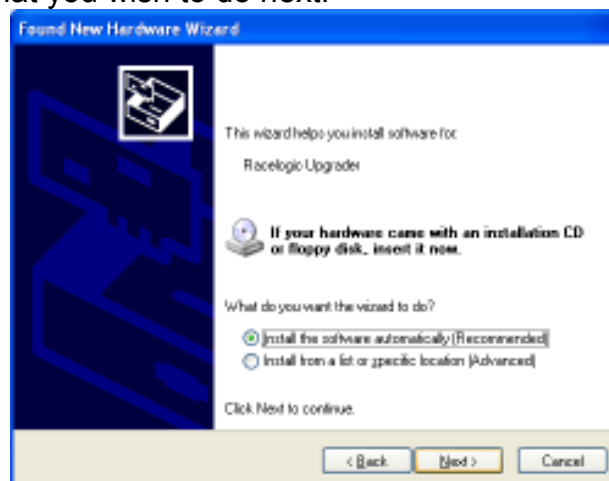
After a short pause, the 'Found New Hardware Wizard' should appear:



NB: If this window does not appear, please go to the 'Update driver in device manager' section at the end of this document.

When the wizard asks if Windows should connect to Windows Update to search for the software, click '**No, not this time**', as the drivers are already on the computer. Then click '**Next**'.

The wizard will then ask you what you wish to do next:

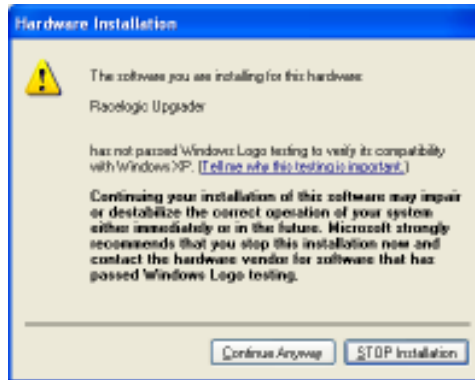


Select **'Install the software automatically (Recommended)'**, as the VBOXTools installation will have told the computer where to find the drivers.

Note: If the wizard fails to find the correct drivers, it may be necessary to specify their location. The drivers can be found on the VBOXTools CD (in the **'Drivers'** directory) or can be downloaded from the downloads section of the Racelogic website (**VBOX -> Downloads -> Downloads Page**).

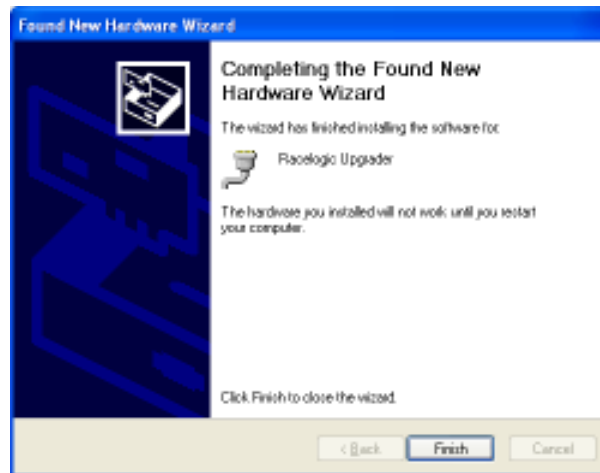
- If you are trying to upgrade the unit's firmware, select the drivers in the directory **'Upgrader'**.
- If you are trying to use the unit with VBOXTools, use the drivers in the directory with the name of the unit you are upgrading.

Next, Windows will display a warning screen:



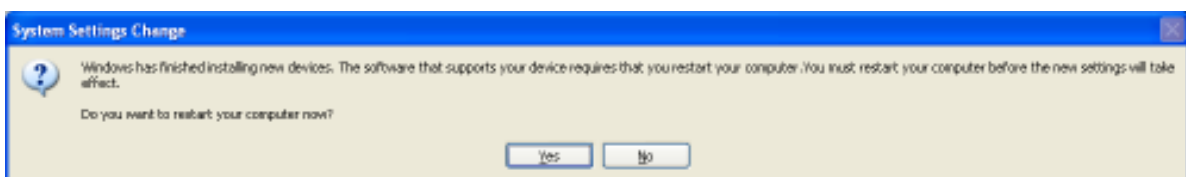
The appearance of this screen is perfectly normal. Simply click **'Continue Anyway'** to proceed.

Finally, the last screen of the wizard informs you that the driver installation has been successful:



Click **'Finish'** to exit the 'Found New Hardware Wizard'.

It may be necessary to restart your computer before the unit can be used properly. Windows will provide a warning similar to either or both of the following if this is the case:



After restarting the computer, the driver installation process will be complete.

Update Driver in Device Manager

If the new found hardware wizard does not appear, then you must tell your computer to update the driver in order to start this process.

Open the start menu and right click on my computer, then select properties at the bottom of the drop down list.



In the window that appears, select the hardware tab at the top, then click on the device manager button.



Once device manager is open, locate your Racelogic device. This will likely be in the Ports (COM & LPT) section, possibly with a yellow exclamation mark over it. Right click and select update driver. The Hardware Update Wizard should now appear and you can follow through the process as shown above for the New Found Hardware Wizard.

