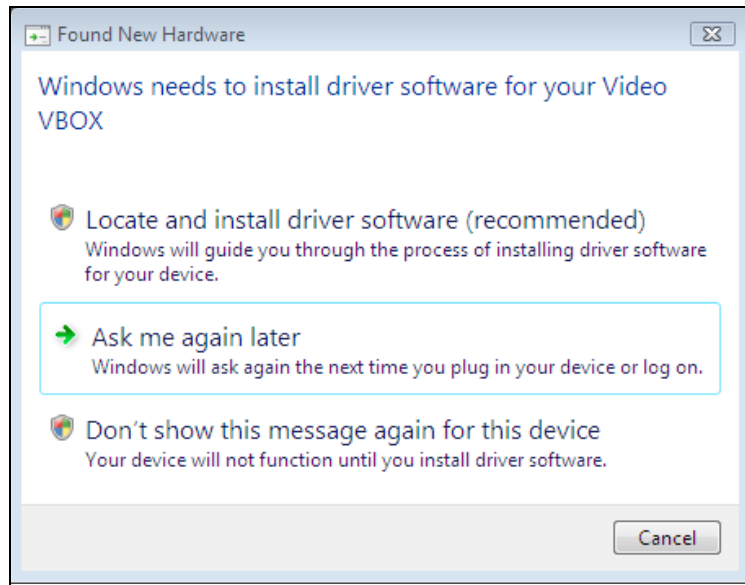


# How to install the USB Drivers in VISTA

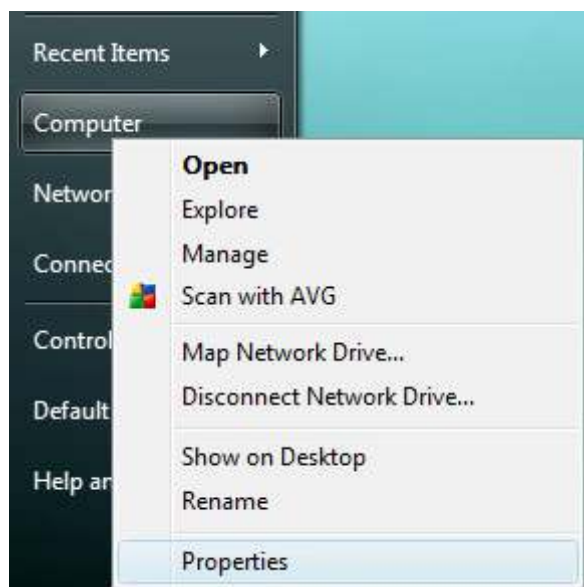
When your device is connected, the message shown below may appear. If it does, click on '**Locate and install driver software (recommended)**' and then select '**Continue**'.



This window will now appear, click '**Don't search online**' [Now skip to page 3]



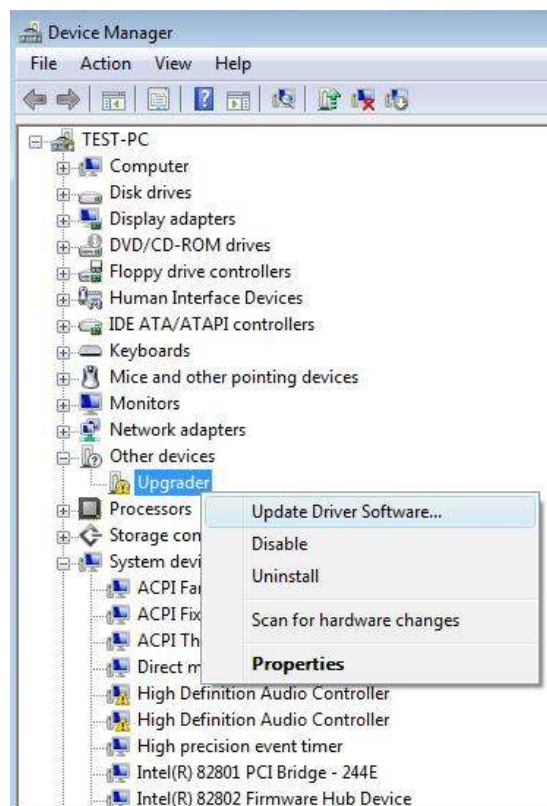
If the first message does not appear, then carry out the following instructions. Right Click on '**Computer**' and select '**Properties**'.



In the window that now appear, select '**Device Manager**' in the top left of the window then connect the powered unit to the computer via the supplied cable.



Once device manager is open, locate your Racelogic device. This will be under **Other Devices**, possibly with a yellow exclamation mark next to it. **Right click** on the device and select **Update Driver Software**.



The window that will now appear will ask how you want to search for driver software. Select the – '**Browse my computer for driver software – Locate and install driver software manually.**' option. In the following window that now appears, click the '**Browse**' button.

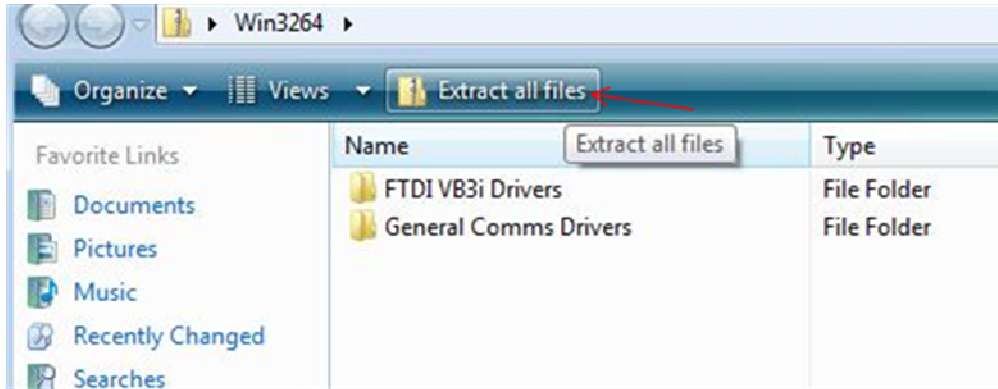


**NB:** If you have not yet installed any Racelogic software, or you are using a 64 bit operating system, please download the drivers from the website.

Link: - <http://www.racelogic.co.uk/?show=VBOX-Downloads-Software>

Or, go to: [www.racelogic.co.uk](http://www.racelogic.co.uk) / VBOX / Support / Software Updates and download VBOX drivers.

Save the file to your desktop. Open the file then click 'extract all files' as shown below.

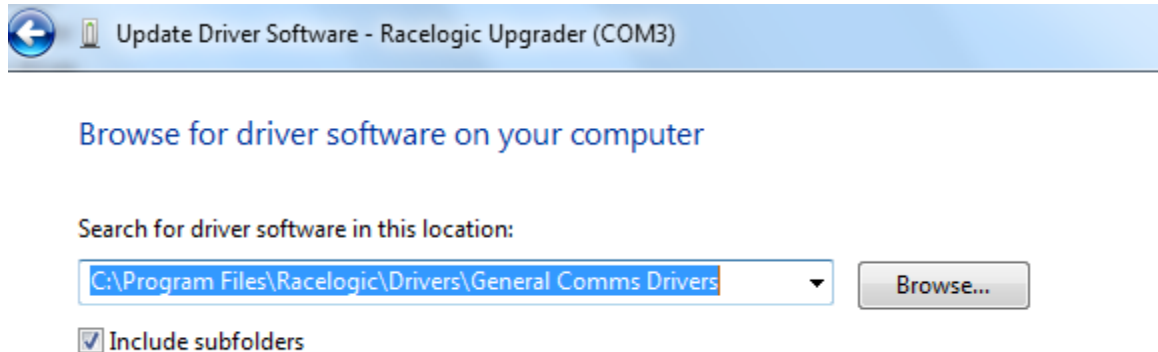


Click Browse... and choose the driver location.

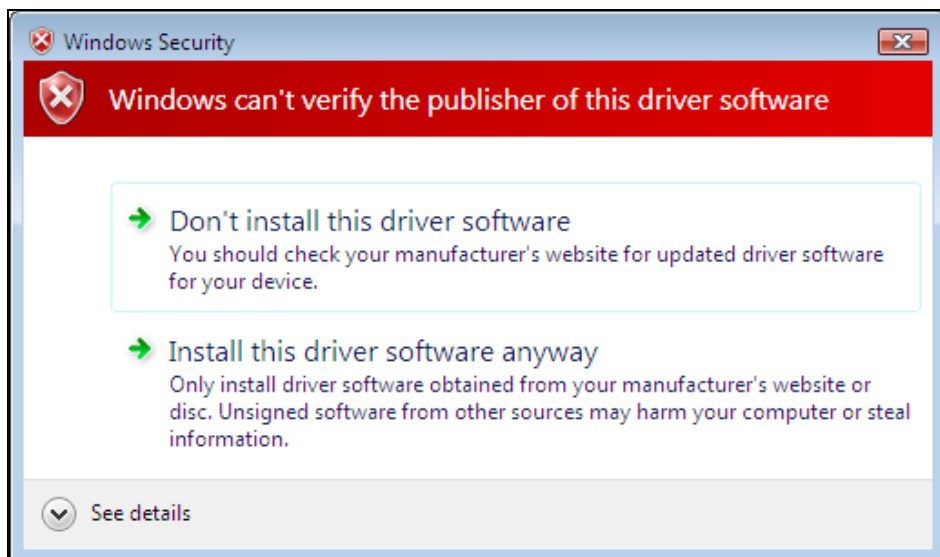
This will either be **C: / Program Files / Racelogic / Drivers / General Comms drivers**

Or, wherever you extracted the downloaded 'win3264.zip' file to.

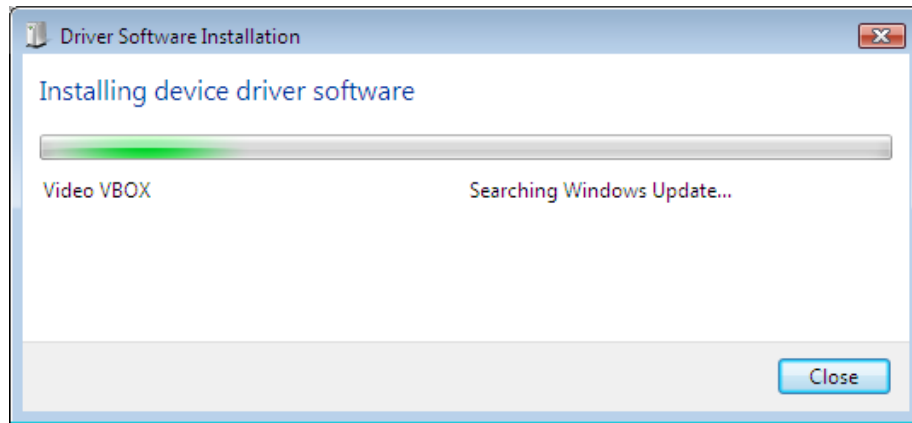
Then click **'Next'**.



The windows security message shown below will now appear. Click **'Install this driver software anyway'**

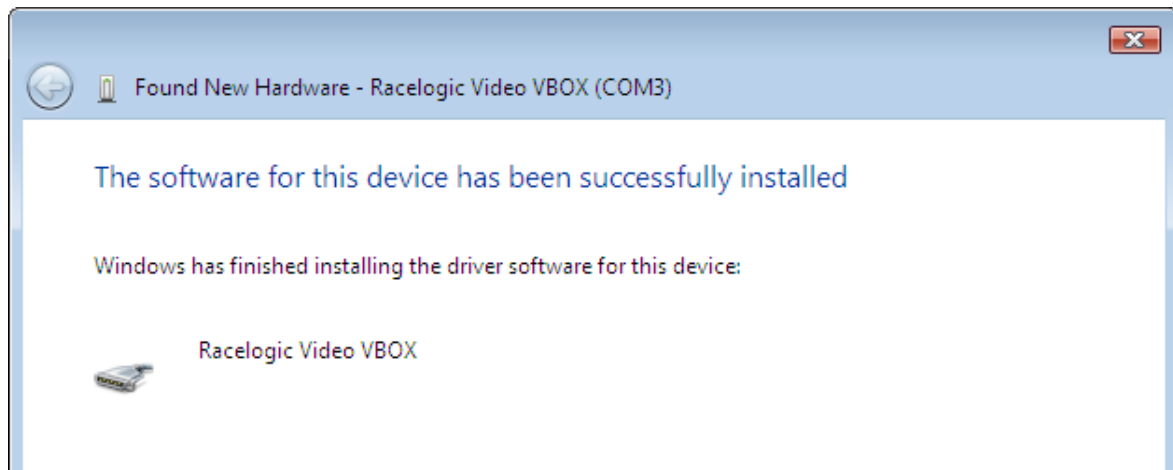


A window will now appear saying **'Installing Driver Software...'**



Once this has finished and the message shown below will appear.  
The driver installation has been successful.

You may have to restart your computer for these settings to take effect.



**NB:** If the error message shown below appears, you simply have to unplug, restart and re-connect your device.



To check it has now connected properly, go back to the **'Device Manager'** and open up the **'Ports'** section, there should be a **'Racelogic'** device listed.

